



ELECTRONIC COPY

621488953
Report verification at igi.org



May 28, 2024
IGI Report Number **621488953**
Description **NATURAL DIAMOND**
Shape and Cutting Style **EMERALD CUT**
Measurements **8.44 X 6.16 X 4.22 MM**
GRADING RESULTS
Carat Weight **2.21 CARATS**
Color Grade **J**
Clarity Grade **VS 1**
Cut Grade **VERY GOOD**

DIAMOND REPORT

May 28, 2024
IGI Report Number **621488953**
Description **NATURAL DIAMOND**
Shape and Cutting Style **EMERALD CUT**
Measurements **8.44 X 6.16 X 4.22 MM**

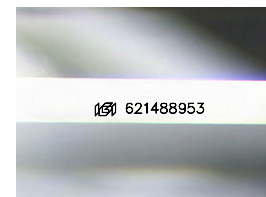
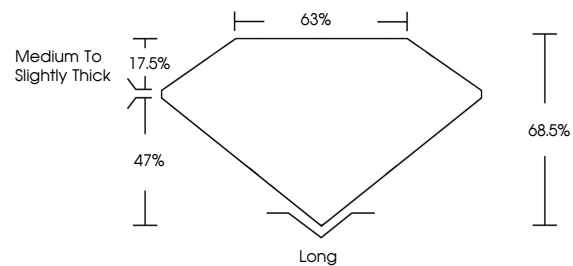
GRADING RESULTS

Carat Weight **2.21 CARATS**
Color Grade **J**
Clarity Grade **VS 1**
Cut Grade **VERY GOOD**

ADDITIONAL GRADING INFORMATION

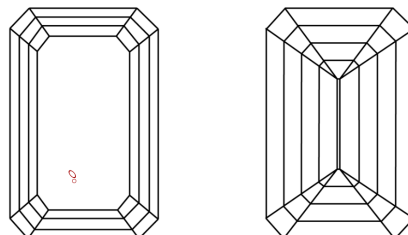
Polish **EXCELLENT**
Symmetry **EXCELLENT**
Fluorescence **NONE**
Inscription(s) **621488953**

PROPORTIONS



Sample Image Used

CLARITY CHARACTERISTICS



KEY TO SYMBOLS

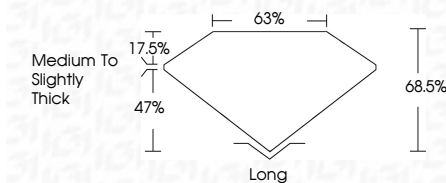
Red symbols indicate internal characteristics.
Green symbols indicate external characteristics.

COLOR

D - F	G - J	K - M	N - R	S - Z	FANCY
Colorless	Near Colorless	Slightly Tinted	Very Light Color	Light Color	

CLARITY

IF	VVS ¹⁻²	VS ¹⁻²	SI ¹⁻²	I ¹⁻³
Internally Flawless	Very Very Slightly Included	Very Slightly Included	Slightly Included	Included



ADDITIONAL GRADING INFORMATION

Polish **EXCELLENT**
Symmetry **EXCELLENT**
Fluorescence **NONE**
Inscription(s) **621488953**



IGI



May 28, 2024
IGI Report No. 621488953
EMERALD CUT
8.44 X 6.16 X 4.22 MM
2.21 CARATS
J
Color Grade
VS 1
VERY GOOD
68.5%
63%
Medium To Slightly Thick
Long
EXCELLENT
EXCELLENT
NONE
 621488953