



GIA REPORT  
\*\*\*\*\*40924

Verify this report at GIA.edu

FACSIMILE

This is a digital representation of the original GIA Report. This representation might not be accepted in lieu of the original GIA Report in certain circumstances. The original GIA Report includes certain security features which are not reproducible on this facsimile.

GIA NATURAL DIAMOND ORIGIN REPORT

January 22, 2025  
 GIA Report Number \*\*\*\*\*40924  
 Shape and Cutting Style Pear Brilliant  
 Measurements 13.28 x 8.08 x 4.82 mm

GRADING RESULTS

Carat Weight 3.09 carat  
 Color Grade D  
 Clarity Grade Flawless

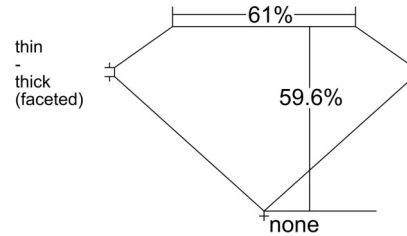
ADDITIONAL GRADING INFORMATION

Polish Excellent  
 Symmetry Excellent  
 Fluorescence None  
 Inscription(s): GIA \*\*\*\*\*40924

ORIGIN RESULTS

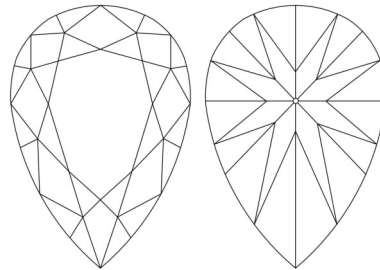
Country of Origin ♦ Angola

PROPORTIONS



Profile not to actual proportions

CLARITY CHARACTERISTICS



GRADING SCALES

GIA COLOR SCALE		GIA CLARITY SCALE		
COLORLESS	D	VERY VERY SLIGHTLY INCLUDED	FLAWLESS	
	E		INTERNALLY FLAWLESS	
	F		VVS <sub>1</sub>	
NEAR COLORLESS	G		VVS <sub>2</sub>	
	H		VERY SLIGHTLY INCLUDED	VS <sub>1</sub>
	I			VS <sub>2</sub>
FANT	J		SLIGHTLY INCLUDED	SI <sub>1</sub>
	K			SI <sub>2</sub>
	L			INCLUDED
M	I <sub>2</sub>			
VERY LIGHT	N		I <sub>3</sub>	
	O			
	P			
	Q			
	R			
LIGHT	S			
	T			
	U			
	V			
	W			
	X			
	Y			
	Z			



♦ Origin is determined via documentary evidence from the miner. Scientific matching of rough to polished performed by GIA.

[reportcheck.gia.edu](https://reportcheck.gia.edu)

The results documented in this report refer only to the diamond described, and were obtained using the techniques and equipment available to GIA at the time of examination. This report is not a guarantee or valuation. For additional information and important limitations and disclaimers, please see GIA.edu/terms or call +1 800 421 7250 or +1 760 603 4500. ©2023 Gemological Institute of America, Inc.



Note: The report number is masked with \*\*\*\*\* for security.



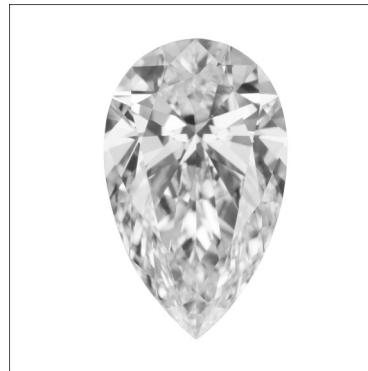
# GIA®

Gemological Institute of America, Inc.  
5355 Armada Drive  
Carlsbad, CA 92008 USA  
T +1 760 603 4500  
F +1 760 603 1814  
E [labservice@gia.edu](mailto:labservice@gia.edu)  
[GIA.edu](http://GIA.edu)

January 22, 2025

DIAMOND TYPE CLASSIFICATION FOR GIA DIAMOND ORIGIN REPORT #\*\*\*\*\*40924

Scientists classify diamonds into two main "types" - type I and type II - based on the presence or absence of nitrogen which can replace carbon atoms in a diamond's atomic structure. These two diamond types can be distinguished on the basis of differences in their chemical and physical properties. Type II diamonds contain little if any nitrogen and they are subdivided into two groups (IIa and IIb) both of which are quite rare (less than 2% of all gem diamonds).



According to the records of the GIA Laboratory, the 3.09 carat Pear Brilliant diamond described in GIA Diamond Origin Report #\*\*\*\*\*40924 has been determined to **type IIa** diamond. Type IIa diamonds are the most chemically pure type of diamond and often have exceptional optical transparency. Type IIa diamonds were first identified as originating from India (particularly from the Golconda region) but have since been recovered in all major diamond-producing regions of the world.

Among famous gem diamonds, the 530.20 carat Cullinan I and the 105.60 carat Koh-i-noor are examples of type IIa.

The information specific to the article described in this document ("Information") is a part of the GIA Report referenced herein (the "Report") as if such Information was included in such Report. The Information was obtained using the techniques and equipment used by GIA at the time of examination. Neither the Information nor the Report is a guarantee or valuation. For additional information and important limitations and disclaimers, please see [GIA.edu/terms](http://GIA.edu/terms) or call +1 800 421 7250 or +1 760 603 4500.

The limitations and disclaimers on the Report and in the client agreement with GIA governing the Report apply to the Information. By requesting GIA to provide this Information, you agree that you will not provide it to any person or entity without also providing the Report (or a copy of the Report).

©2023 Gemological Institute of America, Inc.

**FACSIMILE** This is a digital representation of the original GIA Report. This representation might not be accepted in lieu of the original GIA Report in certain circumstances. The original GIA Report includes certain security features which are not reproducible on this facsimile.