



621488497

DIAMOND REPORT

ELECTRONIC COPY



March 4, 2024
IGI Report Number 621488497
Description NATURAL DIAMOND
Shape and Cutting Style ROUND BRILLIANT
Measurements 8.12 - 8.15 x 5.10 mm

GRADING RESULTS

Carat Weight 2.09 CARATS
Color Grade J
Clarity Grade VVS 2
Cut Grade EXCELLENT

March 4, 2024
IGI Report Number 621488497
Description NATURAL DIAMOND
Shape and Cutting Style ROUND BRILLIANT
Measurements 8.12 - 8.15 x 5.10 mm

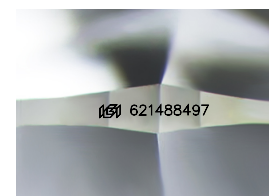
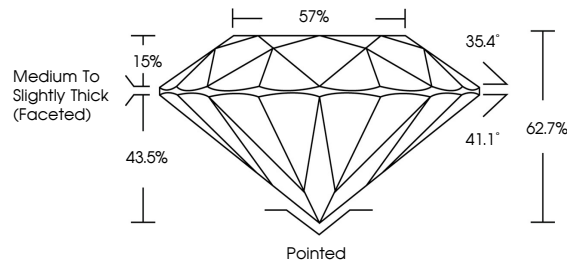
GRADING RESULTS

Carat Weight 2.09 CARATS
Color Grade J
Clarity Grade VVS 2
Cut Grade EXCELLENT

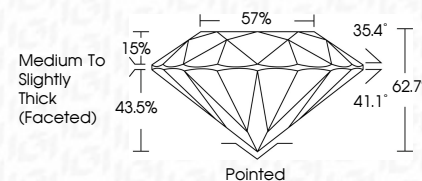
ADDITIONAL GRADING INFORMATION

Polish EXCELLENT
Symmetry EXCELLENT
Fluorescence NONE
Inscription(s) IGI 621488497

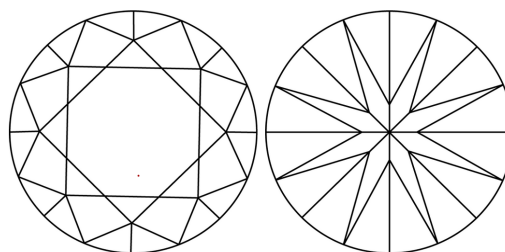
PROPORTIONS



Sample Image Used



CLARITY CHARACTERISTICS



KEY TO SYMBOLS

Red symbols indicate internal characteristics.
Green symbols indicate external characteristics.

COLOR

Table with columns D-F, G-J, K-M, N-R, S-Z, FANCY and rows Colorless, Near Colorless, Slightly Tinted, Very Light Color, Light Color.

CLARITY

Table with columns IF, VS 1-2, VS 1-2, SI 1-2, I 1-3 and rows Internally Flawless, Very Very Slightly Included, Very Slightly Included, Slightly Included, Included.

ADDITIONAL GRADING INFORMATION

Polish EXCELLENT
Symmetry EXCELLENT
Fluorescence NONE
Inscription(s) IGI 621488497



IGI



March 4, 2024
IGI Report No 621488497
NATURAL DIAMOND
ROUND BRILLIANT
8.12 - 8.15 x 5.10 mm
Carat Weight 2.09 CARATS
Color Grade J
Clarity Grade VVS 2
Cut Grade EXCELLENT
Depth 62.7%
Table 57%
Girdle Medium To Slightly Thick (Faceted)
Culet Pointed
Polish EXCELLENT
Symmetry EXCELLENT
Fluorescence NONE
Inscription(s) IGI 621488497